

Floating Wind Serial Fabrication

Matthew Paulonis, Business Development



Organized by



Quest Offshore



The Westin Houston, Memorial City 28-29 June 2021



SAIPEN

Floating Wind Solutions

Saipem at a glance

Saipem is a **Global Solution Provider** in the energy and infrastructure sectors with distinctive engineering and technology skills and a sustainable industrial model pivoting on the **energy transition**.

A **business integrator** with a strong commitment to innovation, **Saipem** is capable of delivering complex projects, thanks to the talent, passion and ingenuity of its people.

Saipem identifies and develops **cutting-edge solutions** for its clients and accompanies them along the evolution path required by the new energy scenario, creating long lasting strategic relationships.

We are “One Company” organized in five business divisions:

- **XSIGHT**
Project Definition Services
- **OFFSHORE E&C**
Engineering & Construction
- **ONSHORE E&C**
Engineering & Construction
- **OFFSHORE DRILLING**
- **ONSHORE DRILLING**

>60

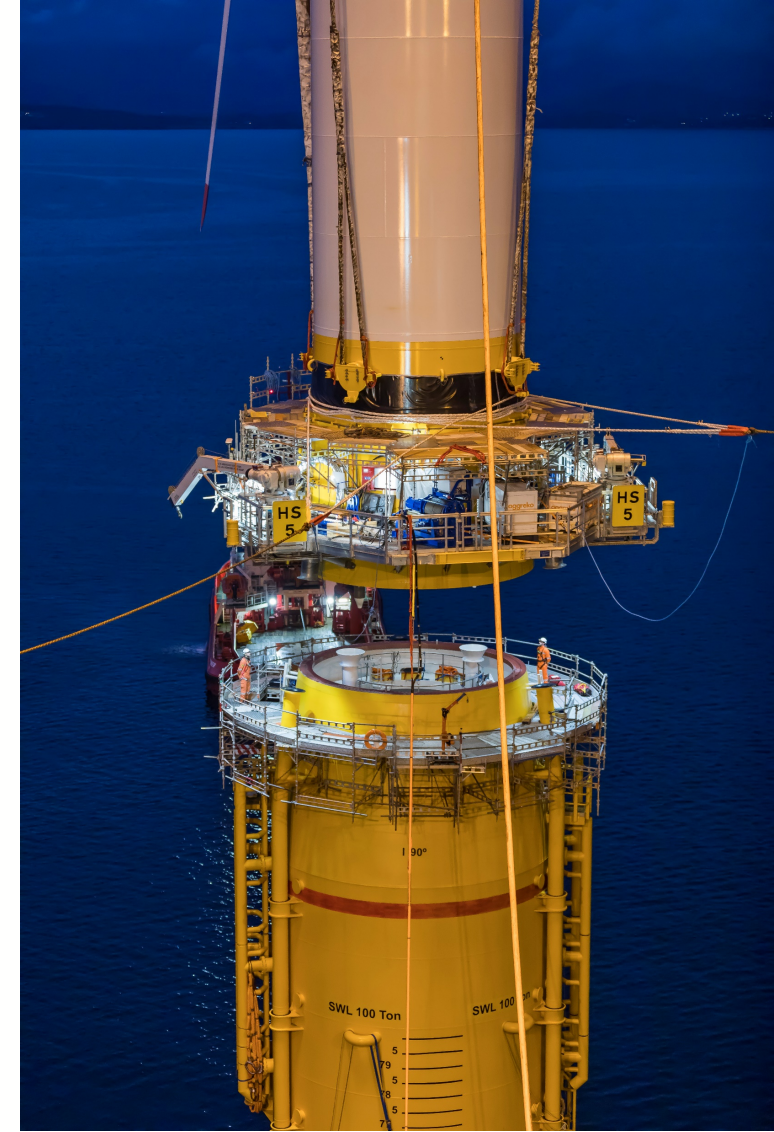
COUNTRIES WHERE WE OPERATE

>32,000

EMPLOYEES

130+

FROM DIFFERENT NATIONALITIES



Floating Wind Solutions



Courtesy of the US National Archives

SERIAL FABRICATION

Where do we start?



Serial Fabrication

- To put things in perspective:
 - Complete Yard size over 1,500,000 square meters (over 370 Acres)
 - Fabrication Area roughly 780,000 square meters (192 acres)



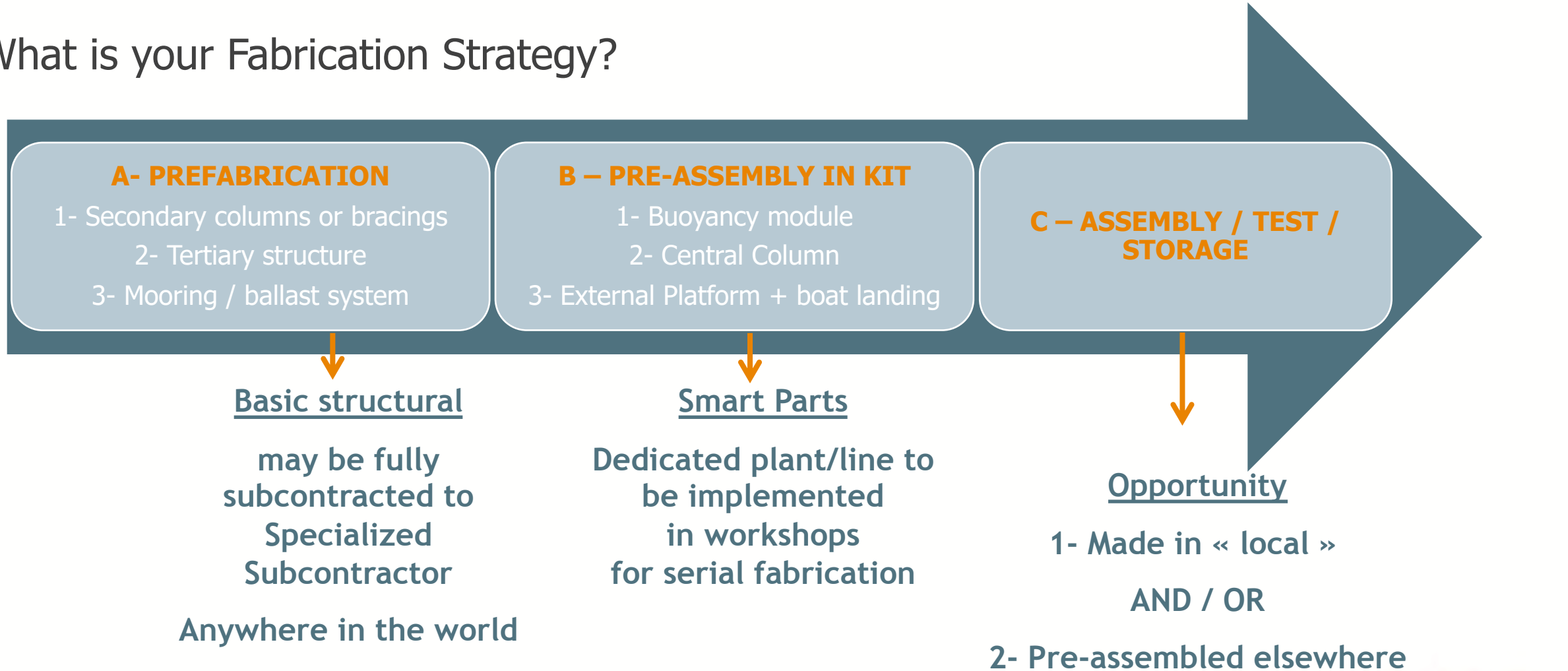
Serial Fabrication – The HEXAFLOAT

- The HEXAFLOAT structure for reference:
 - Central Column height of 33 meters
 - Base diameter of 70 - 80 meters weighing approximately 2,200 tons
 - Foundations are assumed to support a 12 MW WTG



Serial Fabrication

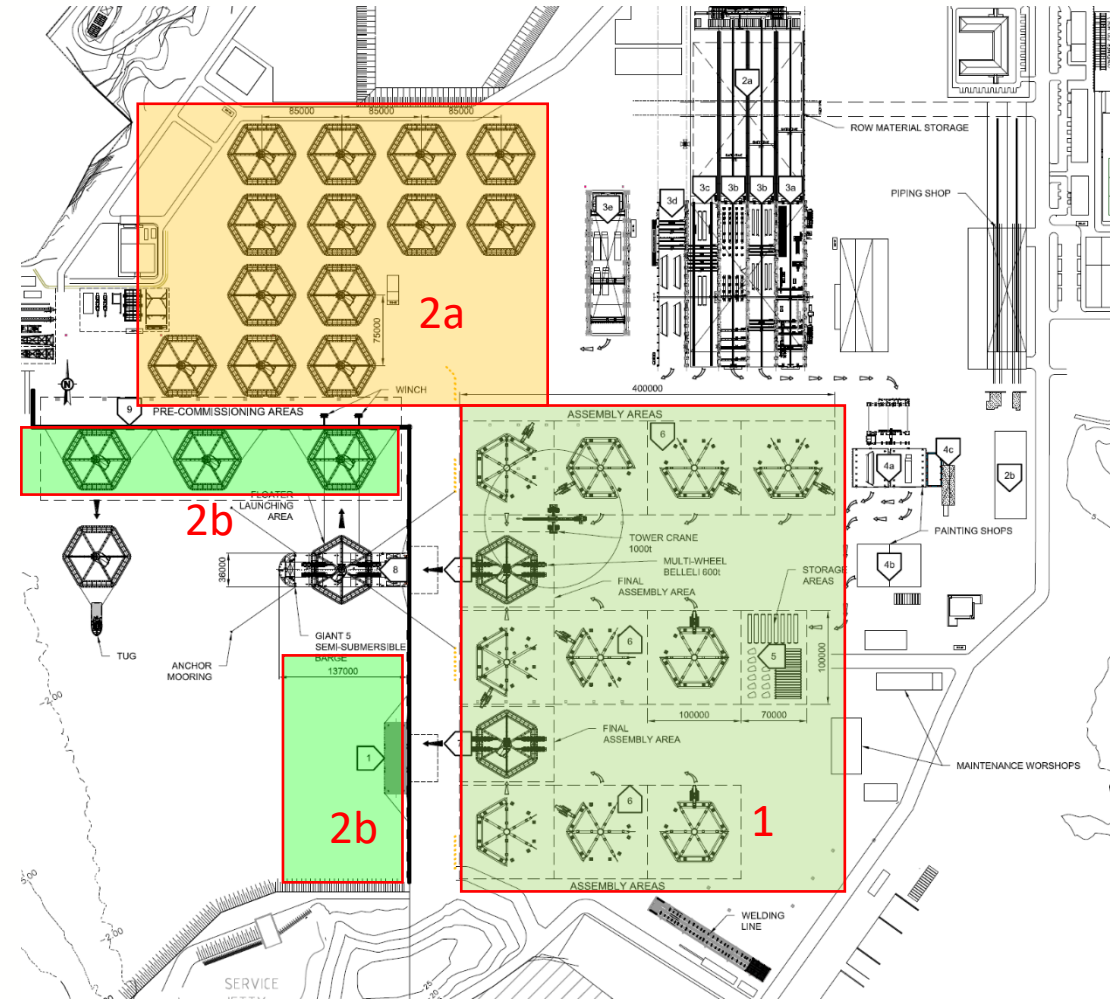
- What is your Fabrication Strategy?



Floating Wind Solutions

Fabrication Yard Layout

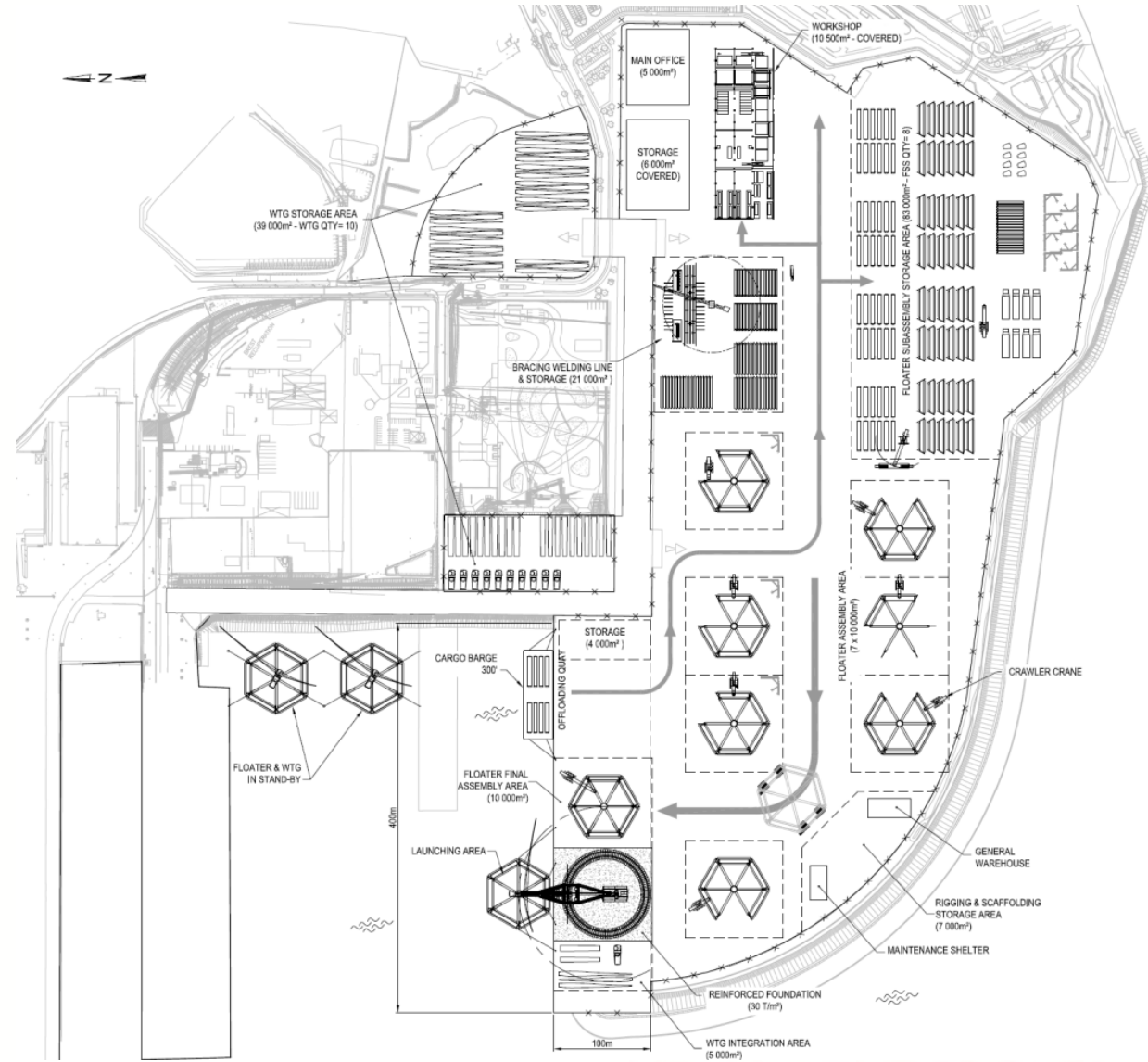
- Area 1 – Assembly Area
 - Assembly Capacity of 10 units in parallel
 - Approx 120,000 sq meters
- Area 2 – Storage Area
 - Storage Capacity
 - 15 units – Onshore (~120,000 sq meters)
 - 4 units – at Quay
 - Facilities for final commissioning
- These highlighted areas do not include the pre-Fab, Pre-Assembly, or Blasting & Painting shops



Yard Layout from the animation

WTG Integration

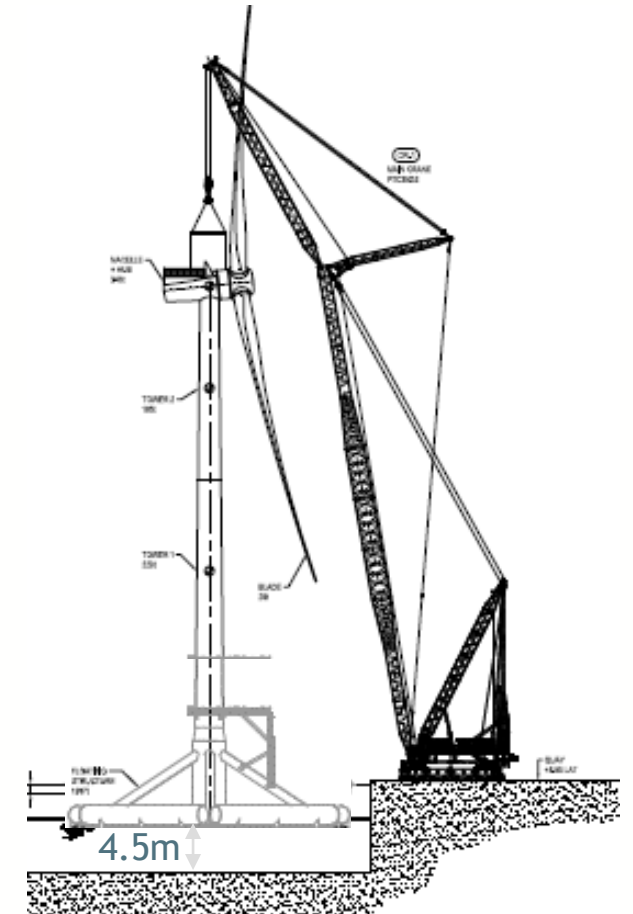
- Kit Assembly and WTG Integration (Local Yard)
 - Assembly / Storage Area of ~40 Ha (nearly 100 Acres)
 - Min Quay length ~ 400 meters



Floating Wind Solutions

WTG Integration

- Kit Assembly and WTG Integration (Local Yard)
 - Floater Launching and WTG Integration with a Heavy Lift Crane with sufficient height and reach
 - Soil bearing capacity 30 – 40 tons / sq m



Where do we go next?





Thank You